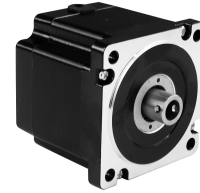




# Hollow Shaft Stepper Motor

86HS



## Electrical Specification

型号Model	86HS76-4560ZK	86HS98-4560ZK
相数Number of phase	2	2
电流Current	5.6A	5.6A
电阻Resistance	0.35 Ω	0.43 Ω
电感Inductance	2.8mH	4.0mH
转子惯量Rotor Inertia	1400g-cm <sup>2</sup>	1700g-cm <sup>2</sup>
保持转矩Holding Torque	45Kg.cm	65Kg.cm
重量Weight	2.5Kg	3.3Kg
机身长度Length	76mm	98mm

\*Note:It's only typical technical data for reference, special requirement can be customized.

