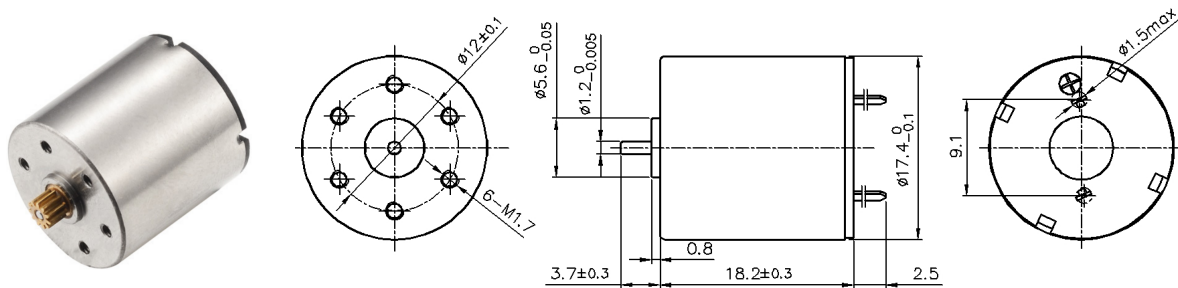




# Coreless Brush DC Motor

LS-1718R



Typical Applications: Door lock, Robot, RC servo, Aircraft model

电机参数 (Motor data)		16B	01A	37B	97A	85B
额定电压下数值 (Values at nominal voltage)						
1 额定电压 (Nominal voltage)	V	5	7.4	7.4	11.1	12
2 空载转速 (No load speed)	rpm	17300	25200	20500	22200	24790
3 空载电流 (No load current)	mA	60	90	40	35	40
4 额定转速 (Nominal speed)	rpm	14870	22550	18650	19090	20950
5 额定转矩 (最大连续转矩) (Nominal torque)	mNm	1.6	2	1.5	2.5	2.5
6 额定电流 (最大连续电流) (Nominal current)	A	0.63	0.8	0.47	0.58	0.59
7 堵转转矩 (Stall torque)	mNm	11.2	19	16.6	17.7	16.3
8 堵转电流 (Stall current)	A	4.1	6.85	4.8	3.8	3.57
9 最大效率 (Max efficiency)	%	79	80	84	78	80
电机常数 (Motor constant)						
10 相间电阻 (Terminal resistance)	Ω	1.21	1.1	1.53	2.96	3.36
11 转矩常数 (Torque constant)	mNm/A	2.70	2.75	3.38	4.68	4.53
12 速度常数 (Speed constant)	rpm/V	3460	3405	2770	2000	2066

## 其他特性参数 Other characteristic parameters

13 环境温度范围 (Ambient temperature)	-10~40℃
14 绕组最高允许温度 (Max permissible winding temperature)	80℃
15 最高允许转速 (Max permissible speed)	30000rpm
16 电极磁极对数 (Number of the pole pairs)	1
17 换向器片数 (Number of the commutator segments)	5
18 电机质量 (Weight)	20.3g

## 16B电机曲线图 motor curve

