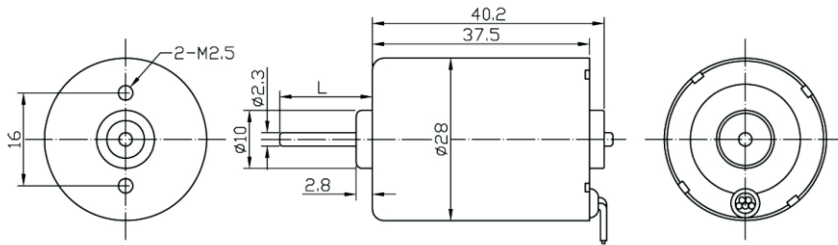
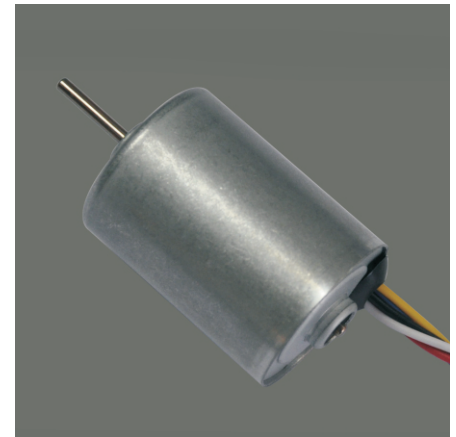


**TEC2838** 28 mm brushless motor

- Low noise, long life. Built-in drive. Power on, then work
- Reverse rotation and Brake control
- PWM Speed control and FG signal feedback
- Can be available with planetary gearbox



Gear Motor Dimensions (mm)

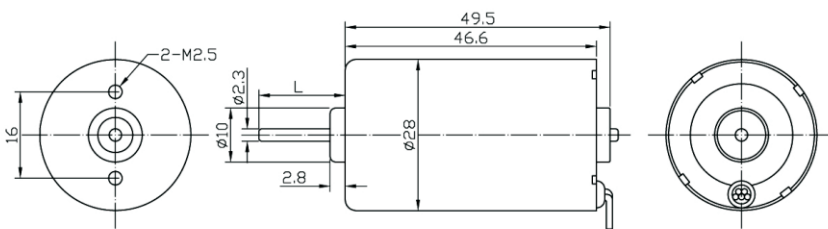


**Motor Technical Data**

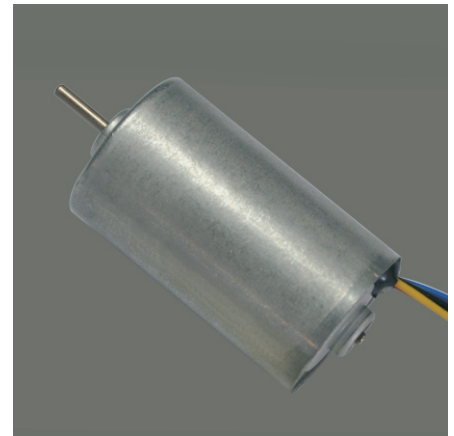
Motor model No.	Rated voltage	No-load speed	No-load current	Rated speed	Rated torque	Rated current	Output power	Stall torque	Stall current
	VDC	r/min	mA	r/min	g.cm	mA	W	g.cm	A
<b>TEC2838-0630</b>	6.0	3000	220	2200	80	450	1.8	300	2.0
<b>TEC2838-1245</b>	12.0	4500	200	3600	110	550	4.1	430	1.8
<b>TEC2838-2460</b>	24.0	6000	80	4400	130	320	5.9	600	2.0

**TEC2847** 28 mm brushless motor

- Low noise, long life. Built-in drive. Power on, then work
- Reverse rotation and Brake control
- PWM Speed control and FG signal feedback
- Can be available with planetary gearbox



Gear Motor Dimensions (mm)



**Motor Technical Data**

Motor model No.	Rated voltage	No-load speed	No-load current	Rated speed	Rated torque	Rated current	Output power	Stall torque	Stall current
	VDC	r/min	mA	r/min	g.cm	mA	W	g.cm	A
<b>TEC2847-0630</b>	6.0	3000	160	2000	110	620	3.2	470	3.2
<b>TEC2847-1240</b>	12.0	4000	120	2700	140	580	2.9	580	2.9
<b>TEC2847-2465</b>	24.0	6500	180	4800	180	720	3.0	720	3.0