



# Planetary Geared Stepper Motor

## LS-32PA/35BYG

Housing Material: Metal  
 Backlash at No Load:  $\leq 1.5^\circ$   
 Bearing at Output: Ball or Sleeve  
 Permissible Overhung Load:  $\leq 10\text{kg}$   
 Permissible Thrust Load:  $\leq 5\text{kg}$   
 Max.Radial Play:  $\leq 0.05\text{mm}$   
 Max.Thrust Play:  $\leq 0.3\text{mm}$



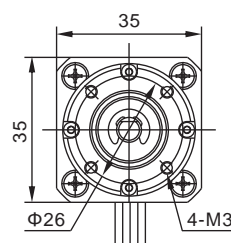
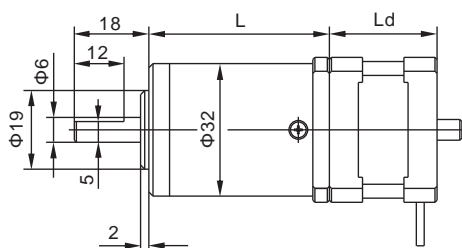
## Motor Data

Model	Step Angle	Length (Ld)	Phase Voltage	Phase Current	Phase Resistance	Phase Inductance	Holding Torque	Lead Wire
		mm	V	A	$\Omega$	mH	g.cm	
35BYGH20-073-4A/B	1.8	20	6.57	0.73	9	4	600	4
35BYGH20-040-4A/B	1.8	20	10.8	0.40	27	17	600	4
35BYGH26-075-4A/B	1.8	26	3.23	0.75	4.3	4	700	4
35BYGH28-058-4A/B	1.8	28	7	0.58	13	9.5	10000	4
35BYGH28-100-4A/B	1.8	28	3.50	1.00	3.5	3.5	1000	4
35BYGH34-050-4A/B	1.8	34	11	0.50	22	12	1000	6

## Gearbox Data

Reduction Ratio(X:1)	4	5	13	19	27	51	71	100	139
Number of gear trains	1	1	2	2	2	3	3	3	3
Rated output torque(kg.cm)	20	20	30	30	30	40	40	40	40
Gear Box Length(mm)	28	28	36	36	36	44	44	44	44

## Mechanical Dimensions



### 4(6)Leads

