



# DC Brushless Motor 57BL

## General Specifications

Item	Specification
Winding type	Star
Hall Effect angle	120° electrical angle
Insulation Class	B
Ambient Temperature Range	-20°C~ +50°C
Insulation Resistance	100MΩMin.500V DC
Dielectric Strength	700V AC 1minute

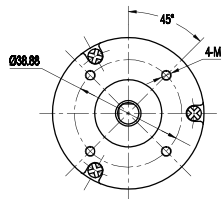
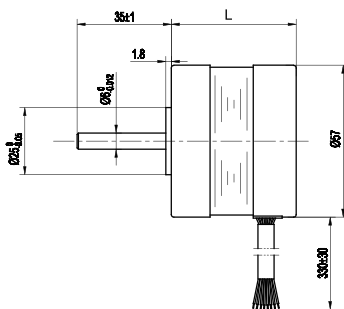


## Electrical specifications

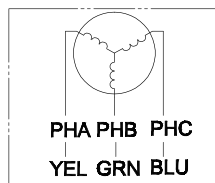
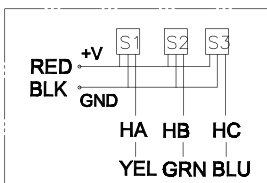
Model	Number of Poles	Number of Phases	Rated Voltage	Rated Speed	Rated Torque	Rated Current	Output Power	Peak Torque	Peak Current	Torque constant	Back EMF	Rotor inertia	Body Length	Mass
			VDC	RPM	N-m	Amps	Watts	N-m	Amps	N-m/Amps	V/KRPM	g-cm <sup>2</sup>	mm	kg
57BL01	4	3	24	2500	0.057	1.2	15	0.18	3.6	0.074	7.75	32	41.5	0.43
57BL02			24	3000	0.11	2.3	34	0.38	6.8	0.059	6.2	42	46.5	0.5
57BL03			24	3000	0.165	3.0	52	0.58	9	0.06	6.3	58	56.5	0.67
57BL04			24	3000	0.22	4.4	69	0.8	13.2	0.062	6.5	72	66.5	0.75
57BL05			24	3000	0.33	6.6	103	1.2	19.8	0.062	6.5	106	86.5	1.0
57BL06			24	3000	0.44	8.6	138	1.6	25.8	0.063	6.6	140	106.5	1.25

Caution 1: Peak Torque is provided for the purpose of performance calculations only. Operate near, or at this condition will result in motor damaged.  
 Note: We can also manufacture products according to customer is requirements.

## Mechanical dimensionis



## Wiring Diagram



SIGNAL	GND	Z	A	+5V	B
COLOUR	colour I	2	3	4	5