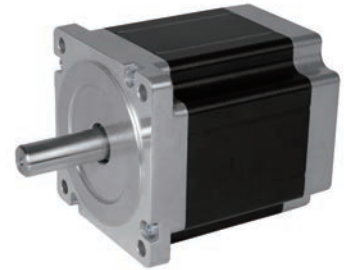




DC Brushless Motor 57BLF

General Specifications

Item	Specification
Winding type	Star
Hall Effect angle	120° electrical angle
Insulation Class	B
Ambient Temperature Range	-20°C~ +50°C
Insulation Resistance	100MΩMin.500V DC
Dielectric Strength	700V AC 1minute

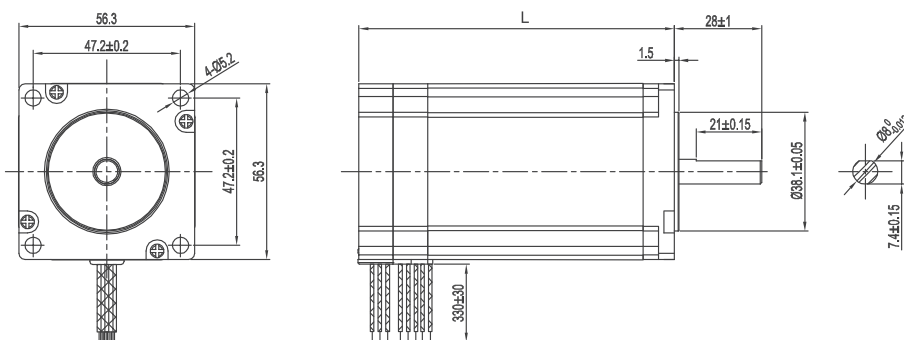


Electrical specifications

Model	Number of Poles	Number of Phases	Rated Voltage	Rated Speed	Rated Torque	Rated Current	Output Power	Peak Torque	Peak Current	Torque constant	Back EMF	Rotor inertia	Body Length	Mass
			VDC	RPM	N-m	Amps	Watts	N-m	Amps	N-m/Amps	V/KRPM	g·cm ²	mm	kg
57BLF01	8	3	24	3000	0.2	4	63	0.6	12	0.065	6.23	120	48	0.65
57BLF02			24	3000	0.4	7.8	125	0.12	23.5	0.066	6.3	170	69	1.0
57BLF03			24	3000	0.6	12	188	1.8	36	0.066	6.3	220	90	1.4
57BLF04			36	3000	0.8	15	250	2.4	45	0.066	6.3	270	111	2.0

Caution 1: Peak Torque is provided for the purpose of performance calculations only. Operate near, or at this condition will result in motor damaged.
 Note: We can also manufacture products according to customer is requirements.

Mechanical dimensions



Wiring Diagram

