



DC Planetary Gear Motor

直流马达(DC Carbon-brush motors)

PG222238Geared Motor Series

PG222238

适用范围/Typical applications:

中空百叶、指纹锁、自动节能器、水表IC卡、玩具礼品、办公设备、家用电器、自动执行器等。

Optical equipment, Kind of finger-electronic locks, Automatic energy saving bath, Water IC card, Toys and gifts, Office equipment, Household appliances, Automatic actuator.



齿轮箱清单/Gearbox data:

级数 Number of stages	1 stages reduction	2 stages reduction	3 stages reduction	4stages reduction	5stages reduction
减速比 Reduction ratio	3.5, 4	12.3, 16, 19	42.8, 64, 90	150, 256, 304, 361, 428,	712, 1024, 1263 1444, 1500, 2036.
齿轮箱长度 Gearbox length "L" mm	13.9	17.5	21.1	24.7	28.3
最大额定力矩 Max. Running torque	1.0Kgf · cm	2.0Kgf · cm	4.0Kgf · cm	4.0Kgf · cm	4Kgf · cm
最大损坏扭力 Max. Gear breaking torque	3.0Kgf · cm	6.0Kgf · cm	12Kgf · cm	12Kgf · cm	12Kgf · cm
效率Gearing efficiency	90%	81%	73%	65%	59%

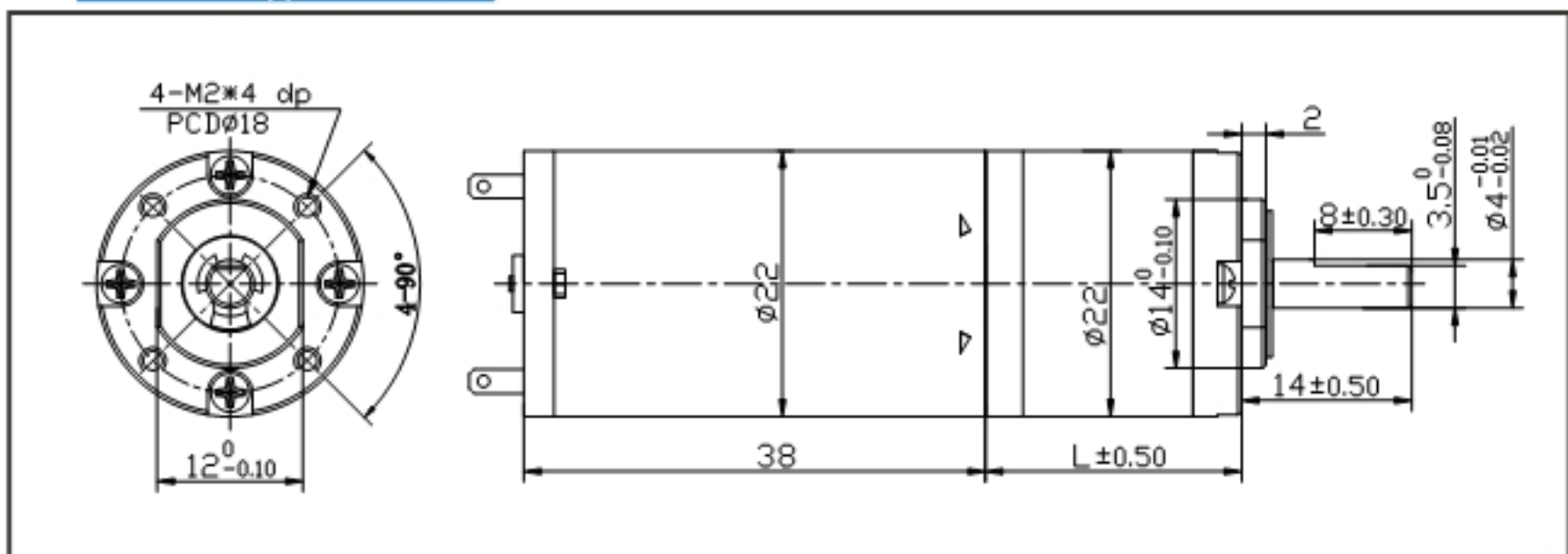
马达清单Motor data:

马达型号 Motor name	额定电压 Rated Volt. V	空载No load		负载扭矩Load torque				堵转扭矩 Stall torque	
		Current	Speed	Current	Speed	Torque	Output power	Torque	Current
		mA	r/min	mA	r/min	gf · cm	W	gf · cm	mA
2238126000	12	≤130	6000	≤370	5350	48	2.6	310	1950
2238246000	24	≤62	6000	≤186	5388	49	2.7	317	950

1、减速后的输出力矩 = 马达力矩 × 减速比 × 齿轮效率，输出转速 = 马达转速 / 减速比。

1. After connecting motor and gearbox which is named gearmotor the output torque: motor torque X reduction ratio X gearing efficiency; output speed: motor speed / reduction ratio.

外形尺寸图/Appearance size



NOTE:

1. Gearmotor named methods: e.g. PG222238246000-90K Motor please refer to the motor data 2238246000. Gearbox please refer to gearbox data reduction ratio 90. Related to gearmotor output speed and torque please refer to motor data.
2. Motor can be installed with magnetic encoder.
3. Standard output shaft after reducing Ø4.0mm. other sizes of the output shaft can make as client request.
4. Chart only for reference, products shall prevail the entity.