

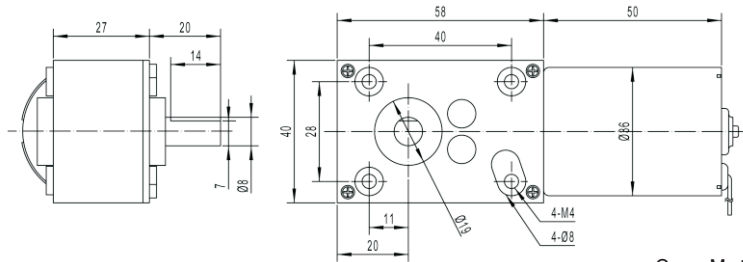


Brushless DC Gear Motor

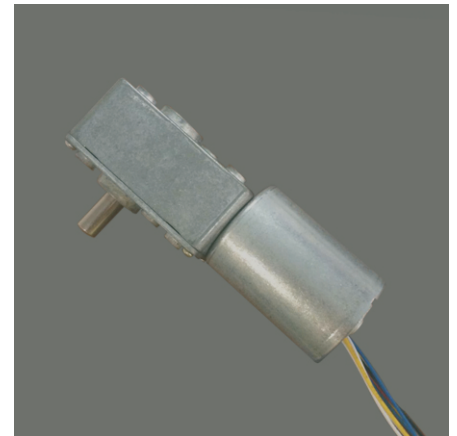
TWG4058-TEC3650

- Small size dc gear motor with low speed and big torque
- 40 × 58mm gear motor provide 2.0Nm torque and more reliable
- Suitable to small diameter. Low noise and big torque application
- Reduction ratio: 81、135、207、405、621

Mechanical Dimensions



Gear Motor Dimensions (mm)



Electrical Specification

Motor model No.	Rated voltage	No-load speed	No-load current	Rated speed	Rated torque	Rated current	Output power	Stall torque	Stall current
	VDC	r/min	mA	r/min	g.cm	mA	W	g.cm	A
TEC3650-2465	24.0	6500	200	5400	200	1000	11.5	1150	2.0
TEC3650-2440	24.0	4000	120	3200	200	600	6.6	1000	2.0
TEC3650-1245	12.0	4500	150	3500	230	880	8.3	820	2.5

Gearbox with motor: TWG4058-TEC3650-2465-XXX

Reduction ratio	81	135	207	405	621				
Length mm	58	58	58	58	58				
No-load speed rpm	78	47	31	16	10				
Rated speed rpm	67	41	28	15	9				
Rated torque kg.cm	10	19	20	20	20				
Max.momentary tolerance torque kg.cm	30	30	30	30	30				

TWG4058-TEC3650-2440-XXX

Reduction ratio	81	135	207	405	621				
Length mm	58	58	58	58	58				
No-load speed rpm	47	28	19	10	6				
Rated speed rpm	39	24	16	8	5				
Rated torque kg.cm	10	19	20	20	20				
Max.momentary tolerance torque kg.cm	30	30	30	30	30				

TWG4058-TEC3650-1245-XXX

Reduction ratio	81	135	207	405	621				
Length mm	58	58	58	58	58				
No-load speed rpm	53	32	22	11	7				
Rated speed rpm	43	26	18	9	6				
Rated torque kg.cm	16	20	20	20	20				
Max.momentary tolerance torque kg.cm	30	30	30	30	30				