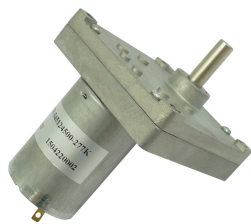




DC GEAR MOTOR

LS-VFO-545



Main voltage: 3VDC、6VDC、9VDC、12VDC、24VDC、36VDC

Typical applications: Pan/Tilt camera、 auto shutter、 welding machines、 water meter IC card、 grill、 oven、 cleaning machine、 garbage disposers、 household appliances、 slot machines、 money detector、 automatic actuator、 coffee machine、 towel disposal、 lighting、 coin refund devices、 peristaltic pump.

Weight: 500~550g/pcs(approx)

Packing details: CTN size: 55X35XH18cm 24pcs/CTN G.W.15Kgs

Electrical Specification

Gearbox data:

| Number of stages | 4 stages reduction | 5 stages reduction | 7 stages reduction |
|---------------------------|--------------------|--------------------|---------------------|
| Reduction ratio | 212、307、409 | 765、818、1105、1228 | 3061、4592、6632、9948 |
| Max. Running torque | 1.5Kgf • cm | 5Kgf • cm | 10Kgf • cm |
| Max. Gear breaking torque | 4.5Kgf • cm | 15Kgf • cm | 30Kgf • cm |
| Max. Gearing efficiency | 65% | 59% | 48% |

Other reduction ratio please telephone or e-mail to our engineering department.

Motor data:

| Motor name | Rated Volt. V | No load | | Load torque | | | | Stall torque | |
|--------------|---------------|---------|-------|-------------|-------|---------|--------------|--------------|---------|
| | | Current | Speed | Current | Speed | Torque | Output power | Torque | Current |
| | | mA | r/min | mA | r/min | gf • cm | W | gf • cm | mA |
| RS-545123000 | 12 | ≤110 | 3000 | ≤450 | 2200 | 100 | 2.2 | 400 | 1800 |
| RS-545124500 | 12 | ≤220 | 4500 | ≤800 | 3300 | 150 | 4.9 | 600 | 3000 |
| RS-545126000 | 12 | ≤350 | 6000 | ≤1500 | 4500 | 200 | 9.0 | 800 | 5500 |
| RS-545243000 | 24 | ≤60 | 3000 | ≤230 | 2200 | 100 | 2.2 | 400 | 900 |
| RS-545244500 | 24 | ≤110 | 4500 | ≤400 | 3300 | 150 | 4.9 | 600 | 1500 |
| RS-545246000 | 24 | ≤150 | 6000 | ≤750 | 4500 | 200 | 9.0 | 800 | 3000 |

1、 This table lists some motors parameters, others please refer to specific parameters of Page 147.

2、 After connecting motor and gearbox which is named gearmotor the output torque: motor torque X reduction ratio X gearing efficiency; output speed: motor speed / reduction ratio.

Mechanical Dimensions

APPEARANCE SIZE

